



## LONG LIFE SCRAPER BLADES FEATURE A UNIQUE DUAL DUROMETER URETHANE DESIGN

Our urethane scaper blades for belt filter press dewatering systems help prevent damage to belting surfaces — especially the belt lacing. That's because their unique construction combines urethane materials of two different hardnesses: one part is rigid to support load pressures, and the second is softer to provide a resilient blade edge. Molded together, they produce one tough scraper blade that stands up to the severest conditions

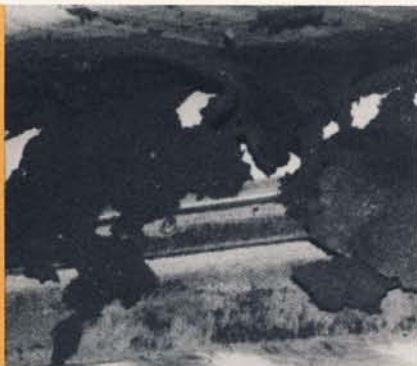
and pressures, yet resists wear while providing superior belt cleaning performance. The slight flexing action of the softer urethane contact edge allows belt lacing to pass under the scraper without joint stress, resulting in longer life to both belt and lacing.

### WHY A DUAL DUROMETER DESIGN?

#### Look at these advantages:

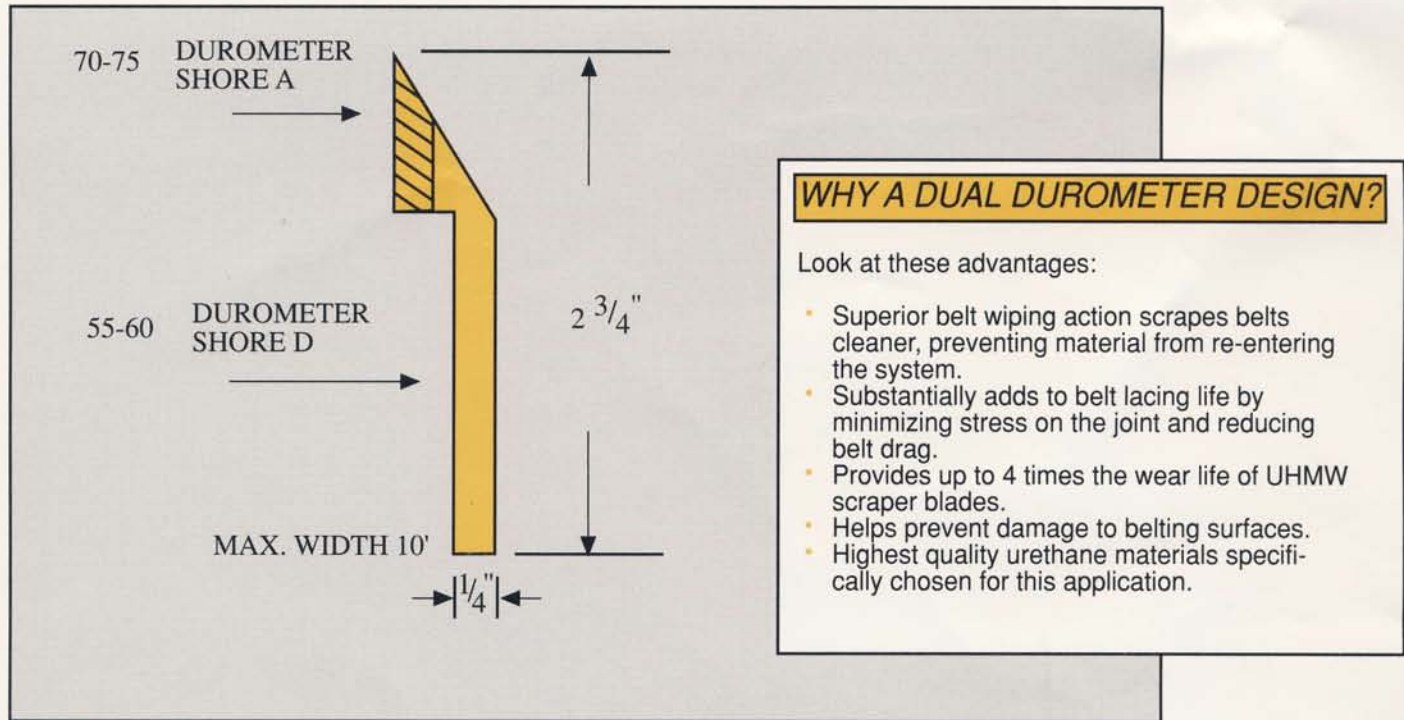
- Superior belt wiping action scrapes belts cleaner, preventing material from re-entering the system.
- Substantially adds to belt lacing life by minimizing stress on the joint and reducing belt drag.
- Provides up to 4 times the wear life of UHMW scraper blades.
- Longer filter belt life means less downtime and lower operating costs.
- Highest quality urethane materials specifically chosen for this application.

*Urethane scraper blades are adaptable to most filter press applications.*



# LONG LIFE SCRAPER BLADES

FEATURE A UNIQUE DUAL DUROMETER URETHANE DESIGN



Our urethane scraper blades help prevent damage to belting surfaces - especially the belt lacing. That's because their unique construction combines urethane materials of two different hardnesses: one part is rigid to support load pressures, and the second is softer to provide a resilient blade edge. Molded together, they produce one tough scraper

blade that stands up to the severest conditions and pressures, yet resists wear while providing superior belt cleaning performance. The slight flexing action of the softer urethane contact edge allows belt lacing to pass under the scraper without joint stress, resulting in longer life to both belt and lacing.